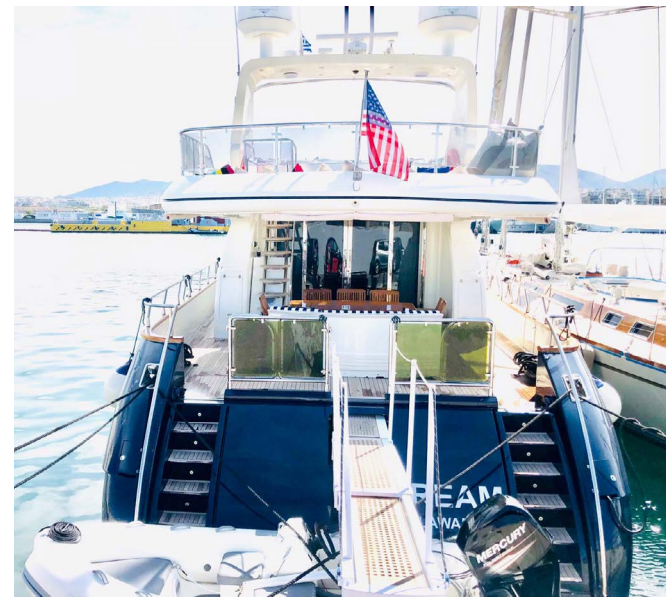




LEOPARD  
26M FLY  
2004  
€ 850,000 EX VAT

Exterior View



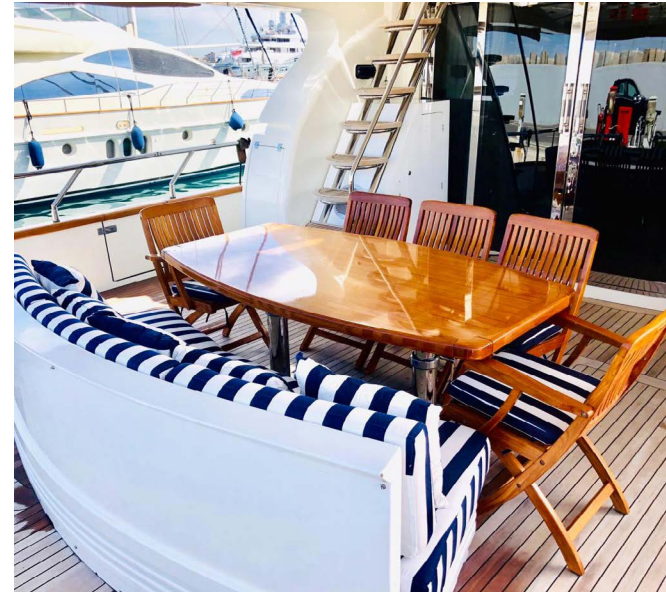
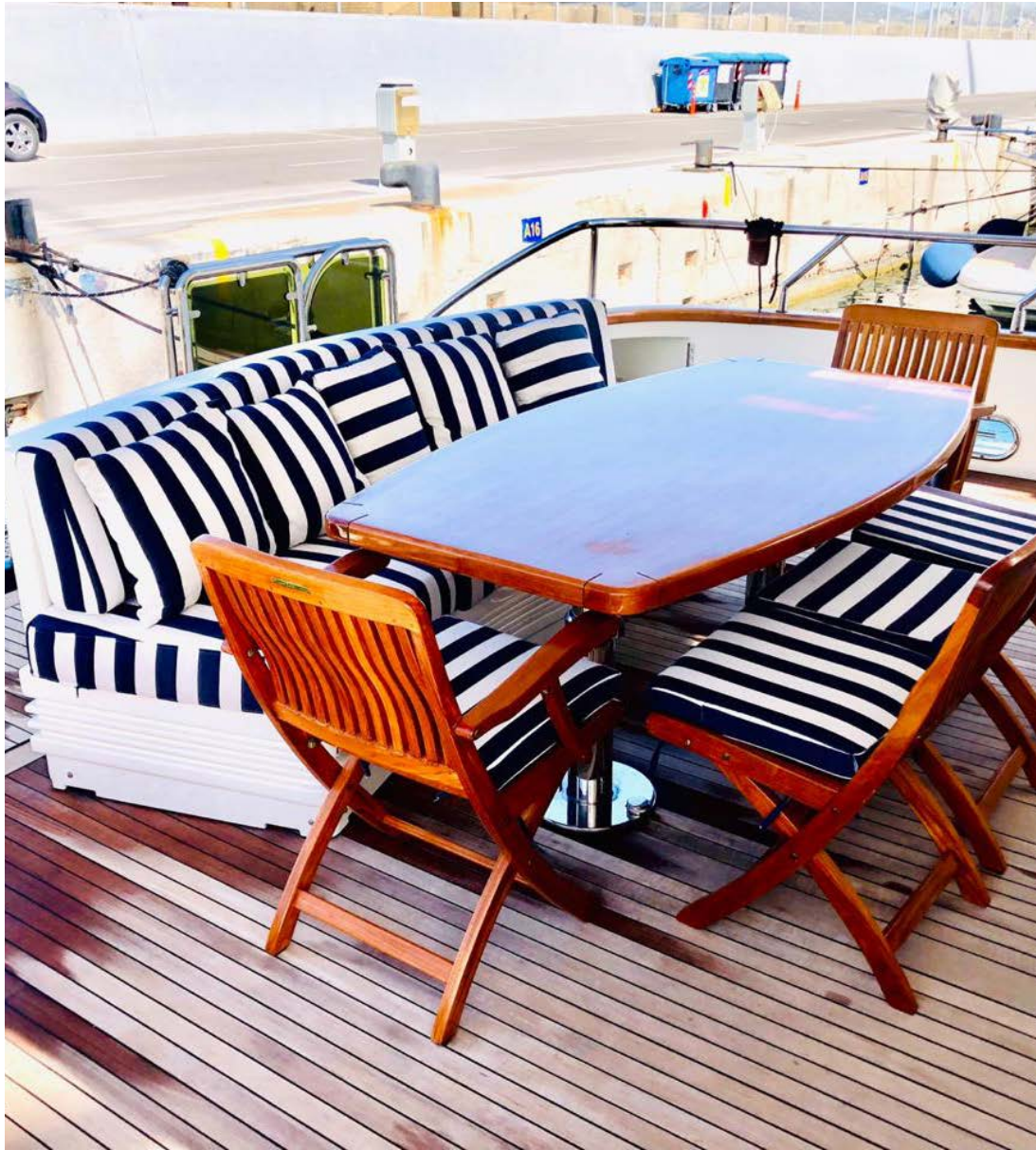
Exterior View



Exterior View



Exterior Deck



Exterior Deck



Cockpit

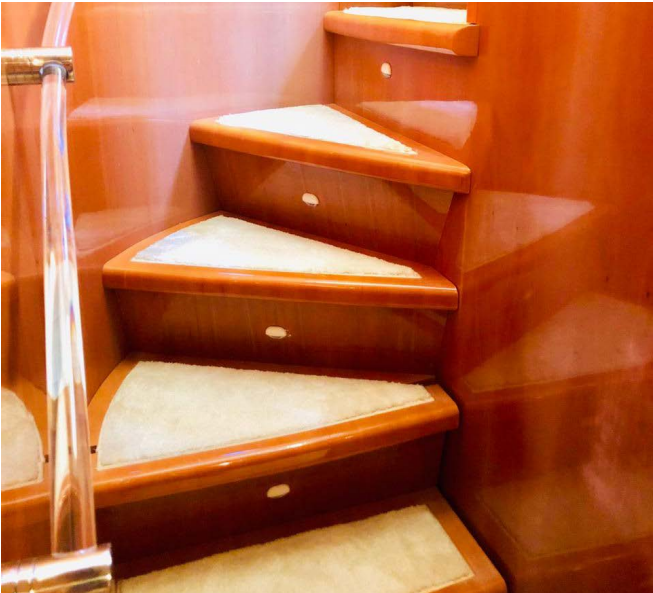


Saloon





Saloon



Galley



Cabins



Cabins



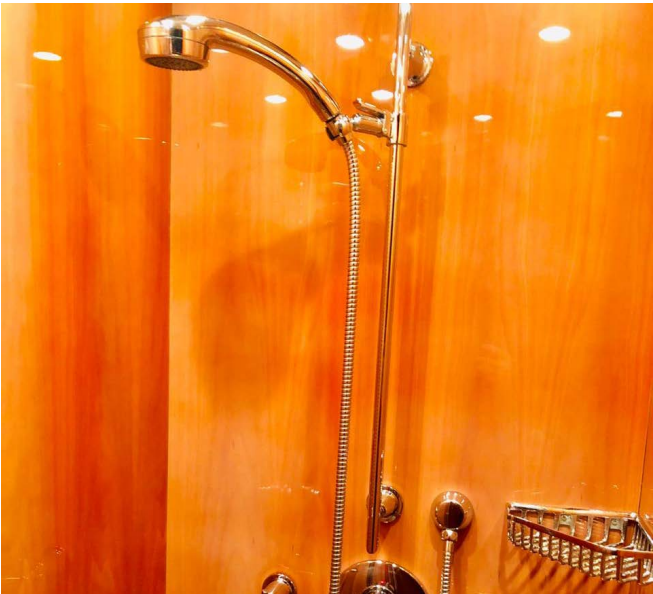
Cabins



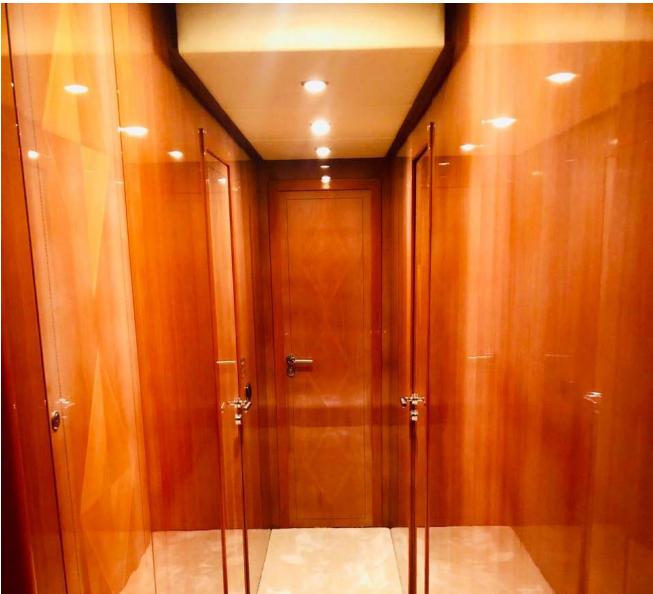
Cabins



Cabins

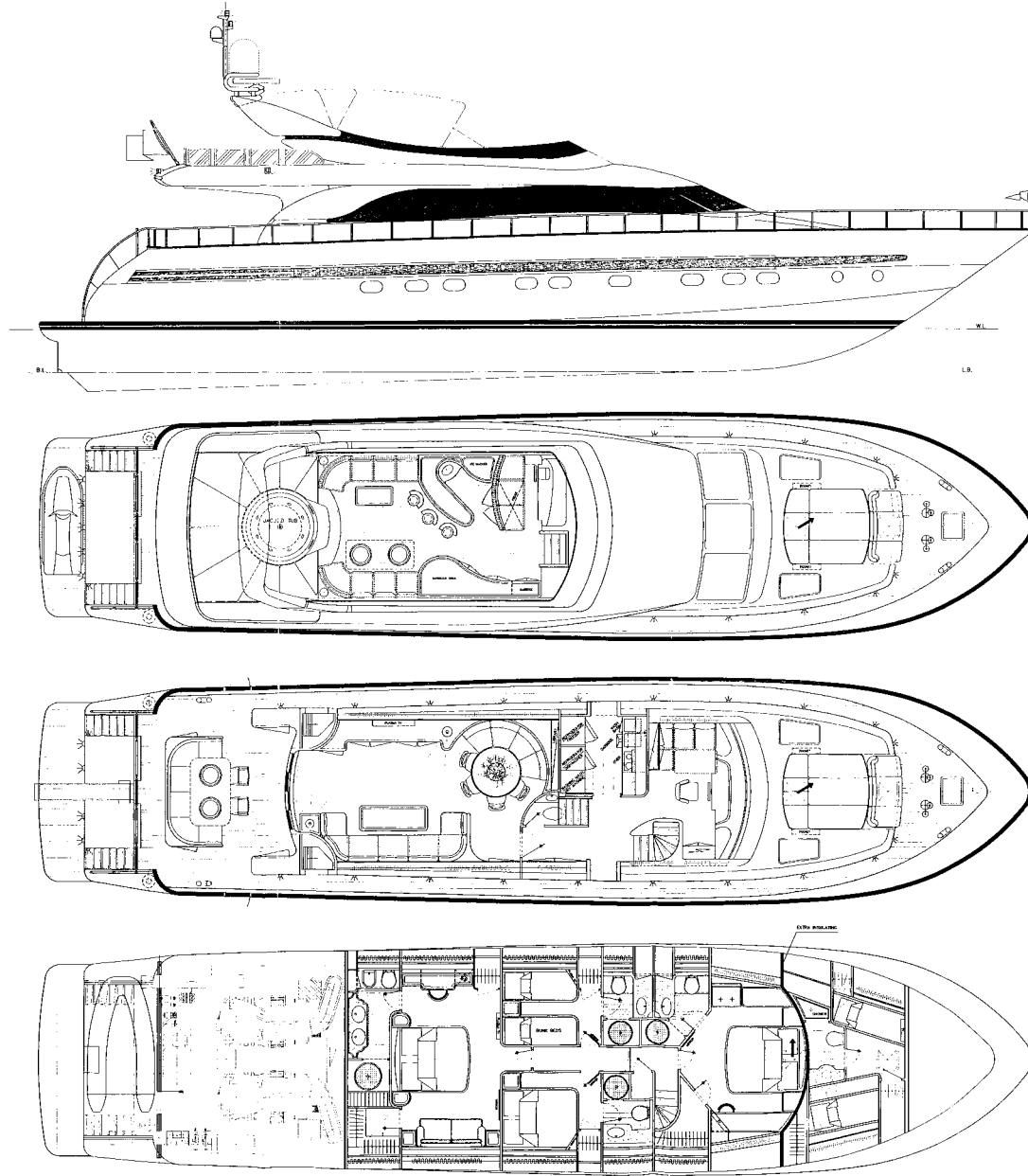


Cabins





# Layout



## Specs

- BUILDER: Leopard- Cantieri Arno
- LOA: 26.10m
- YEAR: 2004
- BEAM: 6.05m
- DRAFT: 1.60m
- DESIGNER: Shipyard
- ACCOM: 9 guests/4 staterooms
- HULL: GRP / No.8
- ENGINES: 2 x 2000hp MTU
- GRT: 76 tonnes
- LYING: Greece

### CONSTRUCTION

- Hull: GRP
- Superstructure: GRP

### MAIN CHARACTERISTICS

#### General

- TYPE: Leopard 26 Fly
- BUILDER: Cantiere Navale Arno
- DESIGNER: Cantiere Navale Arno
- INTERIOR DESIGNER: Cantiere Navale Arno
- YEAR: 2004
- L.O.A: 26.10m / 85'6"
- BEAM: 6.05m / 19'9"
- DRAFT: 1.60m / 5'4"
- REGISTERED TONNAGE: 76.33
- FLAG: British
- CLASSIFICATION: BV, MCA SVC2

#### Capacities

- FUEL CAPACITY: 8500 litres
- WATER CAPACITY: 1800 litres
- WATERMAKER: 200 litres per hour
- GREY WATER TANK: 500 litres
- BLACK WATER TANK: 500litres

## Specs

### **MACHINERY**

- ENGINES: 2 x 2030hp MTU
- TRANSMISSION: ZF

### **GENERATORS & ELECTRICITY**

#### **GENERATORS**

- 1 x Kohler 27KVA
- 1 x Kohler EFOV 20 KVA

#### **ELECTRICITY**

- 380v 3 phase shore power or 220v single phase  
shore power option
- 24v service batteries

### **Air conditioning**

- Throughout the yacht with thermostats in all rooms/cabins
- Air-conditioning units as follows:
  - 1 x units Master cabin
  - 1 x units VIP cabin
  - 1 x unit port guest cabin
  - 1 x unit starboard guest cabin
  - 2 x units bridge
  - 2 x units saloon
  - 1 x unit dining room
  - 1 x unit galley
  - 1 x unit crew quarters

### **Other Machinery**

- BOWTHRUSTER: Hydraulic with joystick in wheelhouse and fly bridge
- WATERMAKER: Idromar

### **ACCOMMODATION**

- There are four guest cabins
- The Interior is finished in gloss varnished wood.

## Specs

### **GALLEY EQUIPMENT**

- Stainless steel sink
- Two Refrigerators
- Miele Cooking hot plate with four electric plates
- Miele dishwasher - professional
- Miele microwave/convention oven
- Miele hood with expanding filter
- Deep freeze
- Storage cupboards/drawers
- Ice maker (saloon)
- Miele washing machine
- Miele tumble dryer
- Corian granite type counter tops

### **COMMUNICATION, NAVIGATION**

#### **& ENTERTAINMENT EQUIPMENT**

##### **Communication Equipment**

- 1x Satcom NERA F33
- 2x Furuno VHF radio 1 in wheelhouse 1 on fly bridge

##### **Navigation Equipment**

- 1x furuno radar NAVNET 1722cc
- 1x furuno NAVNET chartplotter
- 1x digital sounder furuno RD-30
- 1x speedometer
- 1x furuno wind instrument
- 1x furuno GPS GP32
- 1x furuno autopilot

## Specs

### **Bridge instruments:**

- Control lever for acceleration and reverse
- Magnetic compass
- Push button control for engine start/stop
- Gauges for fuel and water tanks
- Daily tanks low-level alarm device
- 2 x MTU control panels
- Control and warning lights for flaps, windlass, horn, side lights and various other equipment
- Electric pilot seat

### **Engine room instruments:**

- Reverses oil pressure gauges
- Engine oil pressure gauge
- Engine water temperature indicators

### **ENTERTAINMENT EQUIPMENTS**

#### **Master cabin**

- Sony 50 inch smart tv
- Yamaha Natural sound AV receiver

#### **VIP room**

- Samsung 38 inch tv
- Yamaha Natural sound AV receiver

#### **Twin Cabin**

- Sharp tv
- Aston dual smart card digital Satalitte receiver

#### **Double Cabin**

- Sharp tv
- Aston dual smart card digital Satalitte receiver

#### **Saloon**

- Sharp 50 inch smart tv
- Yamaha natural sound av receiver
- Sony 4K UHD upscale
- 3G/4G Wifi Industrial Router
- 2 pieces Ubiquiti Aircube ISP Router Wifi N 300Mbps 2.4GHz
- 2 pieces QSC amplifier GX3
- Yamaha wireless streaming Pre amplifier
- Marantz tuner ST4000

## Specs

### DECK EQUIPMENT

- 2 x aft deck warping winches
- 2 x anchor windlasses with warp of 2Kw with bridge and bow control
- 2 x 50kg anchors with 12mm galvanised iron chain, 100m long
- Bow shield with anchor locking and washing plant
- 2 x side fair leads
- 2 x mooring bits and 2 x fair leads at bow
- Built in aft deck 'C' shaped seating & table
- 4 x side bits
- 1 x step ladder
- 1 x remote controlled electric gangway with handrail Benzanzoni
- 2 x boat hooks
- 6 x mooring lines and 1x 100m towline

### FLYBRIDGE

- Teak deck
- Jacuzzi
- 2 x aft seating with table
- STB furniture
- Barbeque
- Bimini top
- Port bar with sink, fridgomar ice maker, big drinks fridge
- Covers for all flybridge furniture and instruments

## Specs

### **BRIDGE EQUIPMENTS**

- 2 pieces Furuno Radar/Chart plotter Navnet/Navionics
- Furuno Gps/Waas navigator GP-32
- Furuno Rd-30 Gps
- Diginav tank level control system
- Furuno Autopilot Nav/pilot
- Bcs bow thruster
- Sanshin search light
- Intercom Deltanav
- Furuno Vhf radio
- Compass Donforth high speed
- Eneo camera system
- Hp 5275 wireless printer

### **FLYBRIDGE**

- Furuno Vhf radio
- Standard Horizon Gps chart Cp300
- Jrc Radar/1000
- Furuno Autopilot Nav/pilot
- Bcs bow thruster
- Diginav tank level control system
- Intercom Deltanav
- Sanshin search light
- Sony Hi-fi system Bluetooth

### **SAFETY & SECURITY EQUIPMENT**

- Fire extinguisher system
- Semi-automatic system with direct control in engine room
- Hand operated portable powder extinguishers installed in all rooms including the engine room and radio room
- Sea-water system
- Smoke and heat detectors in all rooms

### **SEA TOYS**

- Brig dingy 4.20 with 50hp Mercury engine(Brand new)
- Jetski Sea doo spark ( Rotax Power)
- Seabob F5s
- Banana jobe chaser
- Slider Air head
- Paddle board Itiwit
- Paddle board Jobe
- Kano Itiwit
- 8 pieces paddle
- 2 pieces water ski Jobe
- 3 pieces wake board Obrien
- 2 pieces diving equipments



*Benetti*

ATLANTIS  
COLLECTION

MAGELLANO  
COLLECTION

FLYBRIDGE  
COLLECTION

—S—  
COLLECTION

*Grande*  
COLLECTION

  
COBALT BOATS

  
AQUILA

---

For more information please contact: Niso Gado  
+972-50-7644438 | [niso@azimutyachts.co.il](mailto:niso@azimutyachts.co.il) | [www.azimutyachts.co.il](http://www.azimutyachts.co.il)

---